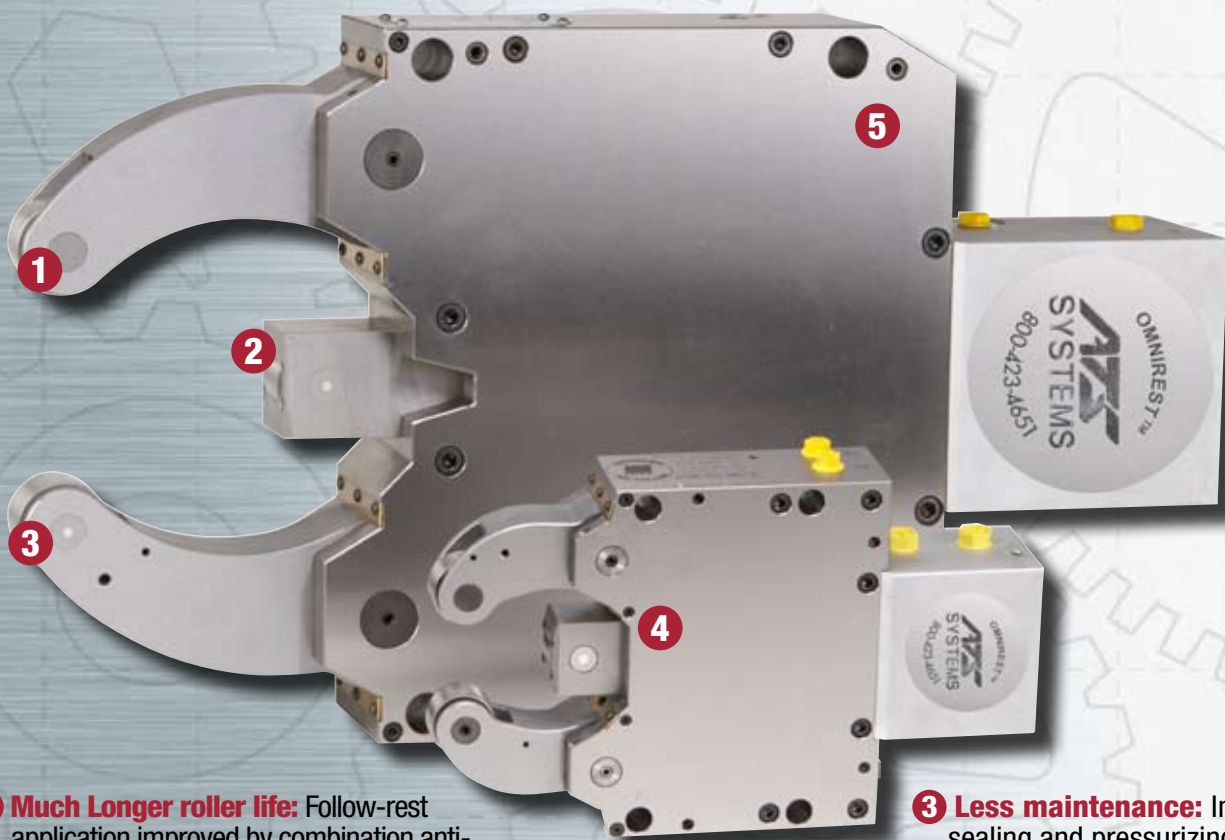




OMNIREST™

ALL OTHER STEADYRESTS ARE NOW OBSOLETE



1 Much Longer roller life: Follow-rest application improved by combination anti-friction end-thrust and radial roller bearings.

2 Optimum accuracy: 0.0002" repeatability

3 Less maintenance: Improved sealing and pressurizing the body cavity reduces contamination.

4 Safer: Safety check valve prevents roller arms from opening in the event of a power failure.

5 Longer accurate life: Hardened and ground wear surfaces and heavy-duty construction.



SALES
FREE IN-PLANT
COST-JUSTIFICATION,
ENGINEERING ANALYSIS



SERVICE
INSTALLATION BY YOUR LOCAL ATS
SERVICE ENGINEERS, - OUR TECHNICIANS
TRAIN YOUR OPERATING PERSONNEL

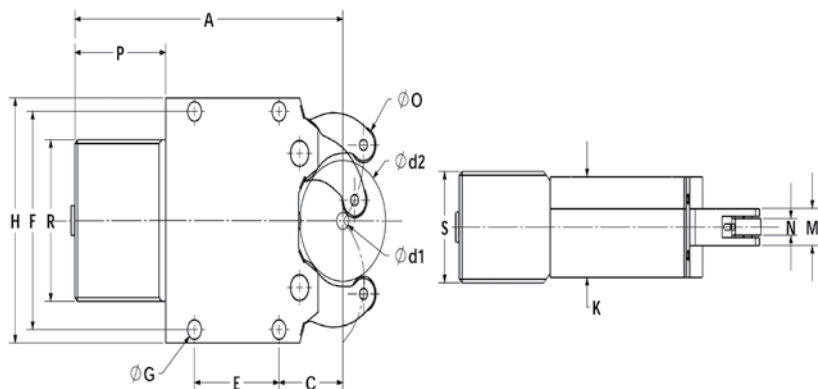


SUPPORT
FIX-IT-FIRST,
ASK-QUESTIONS-LATER
SERVICE PHILOSOPHY



FORMERLY ATS WORKHOLDING & SMW SYSTEMS

PLACE DEALER
STICKER HERE



OMNIREST Model		SLZ-047	SLZ-08105	SLZ-1517	SLZ-325	SLZ-531
Minimum Clamp Diameter	d1	0.157	0.315	0.591	1.378	1.968
Maximum Clamp Diameter	d2	2.756	4.134	6.693	9.842	12.204
	A	8.11	10.99	17.30	24.29	27.52
	C	2.01	2.76	4.84	5.75	7.99
	E	2.52	3.35	5.31	9.45	10.63
	F	4.65	6.69	10.31	14.37	15.75
	G	0.43	0.55	0.71	0.91	0.91
	H	5.20	7.48	11.42	15.75	17.32
	K	2.13	2.28	3.35	4.33	5.71
	M	0.79	1.22	1.89	2.36	2.95
	N	0.45	0.81	1.18	1.57	1.77
Roller Diameter	O	0.75	1.38	1.85	2.05	2.36
	P	2.72	3.25	4.94	6.56	6.99
	R	4.57	3.62	5.71	6.14	6.14
	S	2.36	2.68	3.86	4.88	5.59
Operating Pressure Min.	PSI	73	73	73	73	73
Operating Pressure Max.	PSI	360	765	870	800	1100
Max. Clamp Force Per Roller	LBS.	230	780	1505	20.55	4500
Centering Accuracy Full Range	IN	0.0008	0.0008	0.0016	0.0020	0.0024
Repeatability	IN	0.0002	0.0002	0.0002	0.0002	0.0002
Max. Roller Speed	SFM	2600	2600	2300	2300	2300
Weight	LBS.	15	32	103	253	407



COLLET CHUCKS



QUICK JAW CHUCKS



ROTARY TABLES



AIR CHUCKS



BARFEEDS

Copyright, March 2008, ATS Systems. All Right Reserved. Specifications subject to change without notice.

ATS SYSTEMS

800.321.1833 WWW.ATS-S.COM

949.888.1744 fax 949.888.8336 30222 Esperanza, R.S.M., CA 92688



FORMERLY ATS WORKHOLDING & SMW SYSTEMS