



ACCU-ROCK™ ROTARY TABLES & INDEXERS



- Built in Japan's largest, most advanced workholding factory

- ATS Systems' local sales, service, and support
- All types and sizes available
- All control and installation options available



SALES

FREE IN-PLANT
COST-JUSTIFICATION,
ENGINEERING ANALYSIS



SERVICE

INSTALLATION BY YOUR LOCAL ATS
SERVICE ENGINEERS, - OUR TECHNICIANS
TRAIN YOUR OPERATING PERSONNEL



SUPPORT

FIX-IT-FIRST,
ASK-QUESTIONS-LATER
SERVICE PHILOSOPHY

2-YEAR WARRANTY

STANDARD TERM WITH ATS
INSTALLATION AND TRAINING*

* 1 YEAR WARRANTY
WITH OEM
MOTORS



FORMERLY ATS WORKHOLDING & SMW SYSTEMS

Rotary tables only break while you are using them to make money; choose your provider carefully. Only ATS Systems offers:



ROTARY TABLES BUILT IN JAPAN'S LARGEST, MOST ADVANCED WORKHOLDING FACTORY

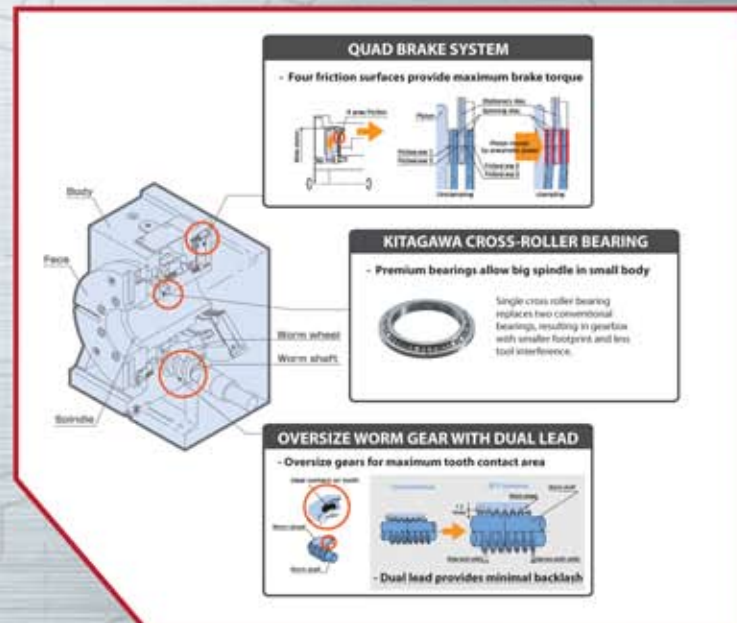
- Made for ATS Systems
- Built for your demanding applications: Oversize worm wheels, heavy duty brakes and cross-roller bearings are standard

on even the basic AR-model tables

- Built to highest precision and quality standards

ATS SYSTEMS' EXCLUSIVE LOCAL SALES, SERVICE AND SUPPORT.

- In shop pre-sale consultation – our full-time, regional managers (not part time representatives) can review your needs first hand
- Installation by our local, factory-trained technicians (competitors do not have such resources) – includes integration to your machine tool and safety / maintenance training for your staff
- Lifetime support by our local field service staff and our full, central-repair facility



AR-Model Specifications in Brief	AR-170 6.5"	AR-200 7.9"	AR-250 9.8"	AR-320 12.6"
Table diameter (mm)	Ø 165	Ø 202	Ø 250	Ø 320
Table register diameter (mm)	Ø 50H7	Ø 65H7	Ø 100H7	Ø 130H7
Spindle through hole diameter (mm)	Ø 40	Ø 45	Ø 70	Ø 105
Center height (mm)	140	140	180	225
Brake method	Pneumatic	Pneumatic	Pneumatic	Pneumatic
Brake torque (N-m), pneumatic 0.5MPa	310	350	600	1200
Gear ratio	1/72	1/90	1/90	1/120
Indexing accuracy (arc-sec)	20	20	20	20
Repeatability (arc-sec)	4	4	4	4
Height x Width x Depth (mm, rear cables)	238x404x257	250x457x287	305x477x293	385x560x316
Mass of product (kg)	41	61	85	135

WIDE RANGE OF TABLE TYPES AVAILABLE



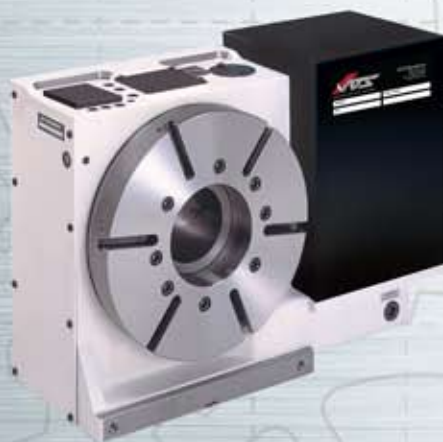
AR MODEL Standard Rotary Table



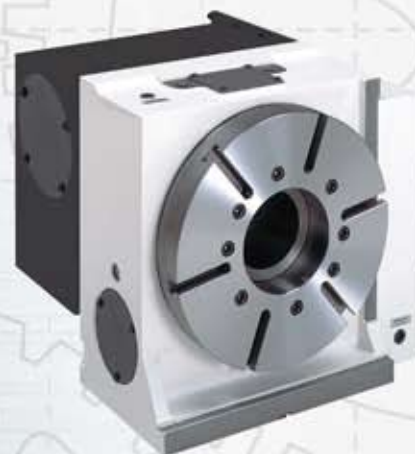
AM MODEL Multi-Spindle Units for Highest Productivity



HT MODEL Top Mounted Motor
for HMC applications



HR MODEL Hydraulic Brake for
Demanding Applications



HB MODEL Back Mounted Motor
for Space Constraints



AX MODEL
5-Axis Tilt + Rotary Tables

**COMPLETE AND DETAILED
SPECIFICATIONS ARE AT
WWW.ATS-S.COM**

Also, you may take advantage of our local regional manager to visit your facility and discuss your needs first-hand.

ALL CONTROL AND INSTALLATION OPTIONS AVAILABLE

Our service technicians can install any of the below at your machine tool OEM or in your own shop, insuring a quick start, proper setup, and appropriate training

- M-code or Direct Connect™ using System 60™
 - Controlling your indexer with ATS Systems' System 60™ AC brushless servo-control allows you to mill rotary features such as slots that require moving one axis at a time. It also permits easily moving your indexer from machine to machine
 - ATS's optional Direct-Connect™ software, for communication via RS232 with most standard 3-axis CNC controls, allows you to program all rotary moves in your CNC control, with setup convenience similar to that of an integrated 4th axis
 - Neither System 60™ option allows simultaneous rotary and X, Y or Z-axis motion, so it is not suitable for milling helical features such as threads. For this, please see below
- As integrated 4th or 5th contouring axis to your machine's CNC control

ATS SYSTEMS IS THE LARGEST VOLUME ROTARY TABLE FIELD INTEGRATOR IN NORTH AMERICA.

FANUC, MITSUBISHI, OKUMA, AND SEIMENS MOTOR OPTIONS AVAILABLE

PLACE DEALER STICKER HERE

MANY ACCESSORIES AND OPTIONS AVAILABLE



- Tailstocks and spindle-with-brake supports
- Through-spindle hydraulic porting
- Hydraulic or pneumatic actuators with drawbars
- Collet chucks, jaw chucks, and mandrels
- Lifetime support



COLLET CHUCKS



BARFEEDS



QUICK JAW CHUCKS



AIR CHUCKS



STEADYRESTS

Copyright, March 2009, ATS Systems. All Right Reserved. Specifications subject to change without notice.

ATS SYSTEMS

800.321.1833 WWW.ATS-S.COM

949.888.1744 fax 949.888.8336 30222 Esperanza, R.S.M., CA 92688

ATS
FORMERLY ATS WORKHOLDING & SMW SYSTEMS